

Welcome to the

FALL CONGREGATIONAL MEETING

AGENDA

- ✦ Welcome – Scott Hartwig
- ✦ Worship & Devotion
- ✦ State of the Church – Dion Garrett & Ryan Peterson
- ✦ Financial Update – Jeff Cook
- ✦ Board of Directors Report – Scott Hartwig
- ✦ Closing Prayer

TODAY IS THE DAY

CCLI Song No. 5200924

© 2008 Integrity's Praise! Music | Integrity's Hosanna! Music |
Leadworship Songs | | (Admin. by Integrity Music, Inc.)

Lincoln Brewster | Paul Baloche

For use solely with the SongSelect Terms of Use. All rights
Reserved.

I'm casting my cares aside

I'm leaving my past behind

I'm setting my heart and mind on You

Jesus

I'm reaching my hands to Yours
believing there's so much more
knowing that all You have in store for me is good

It's good

Today is the day

You have made

I will rejoice and be glad in it

Today is the day

You have made

I will rejoice and be glad in it

And I won't worry about tomorrow
I'm trusting in what You say

Today is the day
Today is the day

I'm casting my cares aside

I'm leaving my past behind

I'm setting my heart and mind on You

Jesus

I'm reaching my hands to Yours
believing there's so much more
knowing that all You have in store for me is good

It's good

Today is the day

You have made

I will rejoice and be glad in it

Today is the day

You have made

I will rejoice and be glad in it

And I won't worry about tomorrow
I'm trusting in what You say

Today is the day
Today is the day

The Church's one foundation
is Jesus Christ her Lord
She is His new creation
by water and the Word

From heaven He came
and sought Her
to be His holy Bride

with His own blood He bought Her and for Her life
He died

Mid toil and tribulation
and tumult of Her war
She waits the consummation
of peace forevermore

till with the vision glorious
Her longing eyes are blest
and the great Church victorious shall be the
Church at rest

DEVOTION

Julie Lorenz

Adult Ministry and Small Groups Director

STATE OF THE CHURCH REPORT

Pastor Dion Garrett

Director of Community Engagement

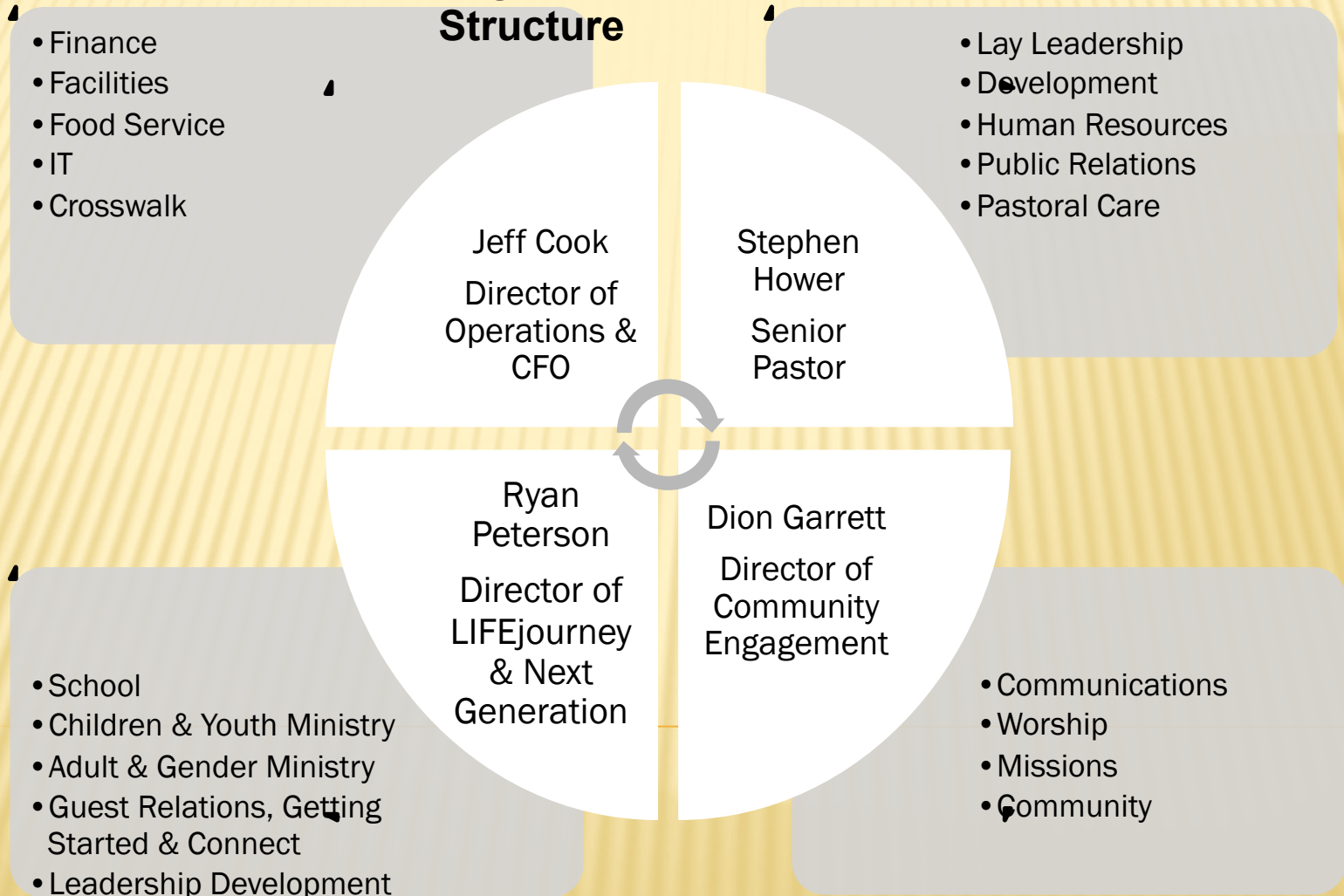
Pastor Ryan Peterson

Director of LIFEjourney/Next Generation

THE STATE OF LEADERSHIP

THE STATE OF LEADERSHIP

Organization Structure



STRATEGIC INITIATIVES

- ✦ We will be a community-focused church.
- ✦ We will lead people to discover, accept and live out their calling (LIFEjourney).
- ✦ We will keep the Next Generation as today's priority.

DISCUSSION

- ✦ Quickly read the “State of the Church” document
- ✦ Discuss
 - ✦ What is one thing that I learned?
 - ✦ What is one thing I still have questions about?

FINANCIAL PRESENTATION

Jeff Cook

Chief Financial Officer

OVERVIEW

- ✦ Summary Presentation
- ✦ Amounts are in thousands (000)'s
- ✦ Year refers to the end of the Fiscal Year (June 30)
- ✦ Amounts do not include non-cash expenses
 - ✦ Depreciation
 - ✦ Amortization
- ✦ Primary Funds are General Fund and School Fund

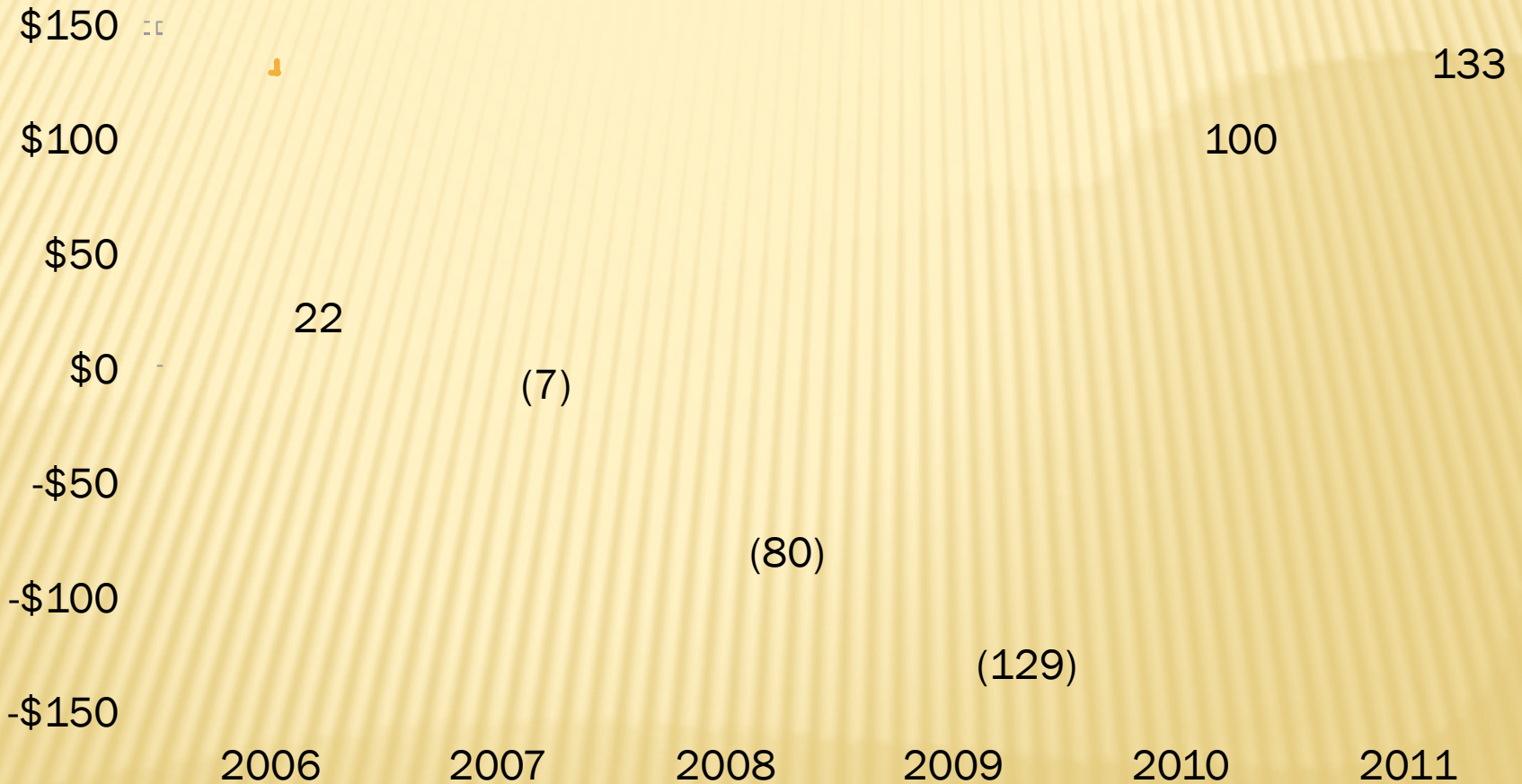
FISCAL YEAR 10/11

General Fund	Budget	Forecast	Actual
General Offerings	\$3,652	\$3,443	\$3,438
Other Income	\$964	\$850	\$874
Operating Expenses	\$2,680	\$2,410	\$2,386
Ministry Expenses	\$1,932	\$1,814	\$1,793
Surplus/(Deficit)	\$4	\$69	\$133

School Fund	Budget	Forecast	Actual
Tuition ECE – 8 th Grade	\$1,949	\$2,006	\$2,007
Third Source Funding	\$230	\$205	\$211
Other Income	\$195	\$158	\$181
ECE – 8 th Grade Expenses	\$2,048	\$1,987	\$2,005
Other Expenses	\$333	\$310	\$319
Surplus/(Deficit)	(\$7)	\$72	\$75

*Forecast is based on actual results through March 2011.

GENERAL FUND SURPLUS/(DEFICIT)



GENERAL FUND GIVING



GIVING TRENDS

- ✦ General Fund giving FYTD September 2011 is down \$2k or 1/4% compared to FYTD September 2010
- ✦ FYTD September 2011 General Fund giving is \$6k or 3/4% below budgeted giving
- ✦ We are projecting to be ahead of FYTD budgeted giving by the end of October.

LAUNCH CONTRIBUTIONS

- ✦ Total Pledges as of 09/30/11 are \$2,849k from 1313 individuals representing 567 households.
- ✦ Total contributions received as of 09/30/11 are \$962k. This is an average of \$80k per month since Launch began.
- ✦ We are not done yet! We are still working towards 100% participation.

GENERAL FUND EXPENSE TRENDS

- ✦ FYTD September 2011 General Fund expenses are \$50k or 4.8% below budgeted expenses
- ✦ We do however expect that approximately \$40k of these expense savings will be incurred later in the fiscal year.

FINANCIAL POSITION AT END OF 1ST QUARTER

✦ Budgeted Deficit	\$50
✦ Below Budget Income	\$20
✦ Below Budget Expenses	<u>(\$50)</u>
✦ Actual Deficit	\$20

SCHOOL FUND UPDATE

- ✦ Finished FY10/11 with a surplus of \$75k
- ✦ Current year enrollment ECE through 8th grade is 520 students.
- ✦ At the end of the 1st quarter the school is \$43k ahead of budget.
- ✦ The Annual Fund & PTL initiatives have implemented new fundraising opportunities.

OTHER INFORMATION

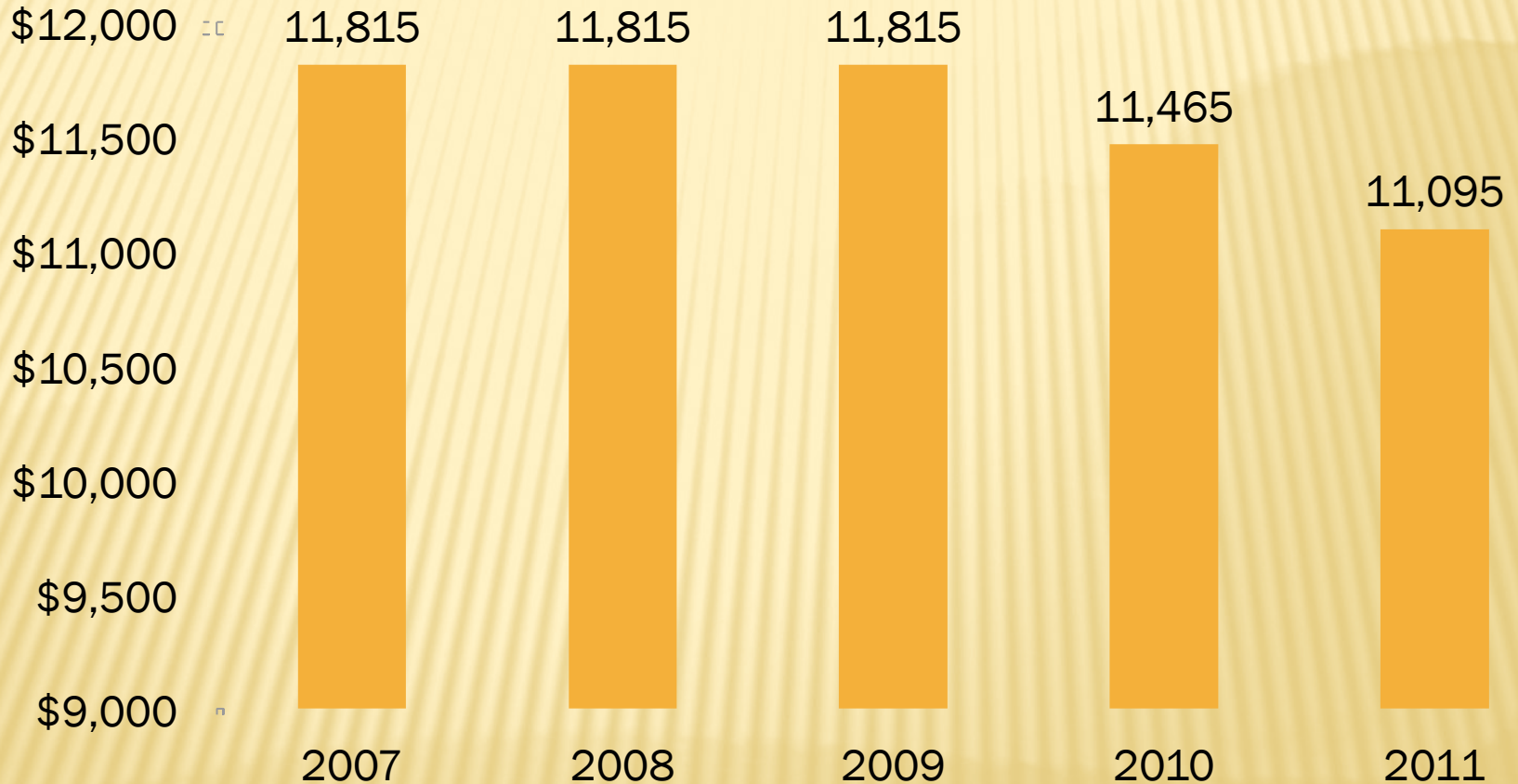
- ✦ Capital Campaigns / Funding Efforts
 - ✦ Generation to Generation
 - ✦ Mission 24/7
 - ✦ Launch
- ✦ Debt Outstanding
 - ✦ Total Bond Debt
 - ✦ Net Bond Debt

CAPITAL CAMPAIGNS / FUNDING EFFORTS

- ✦ Generation to Generation has a balance of \$158k which will be used for debt reduction.
- ✦ Mission 24/7 has a balance of \$2,010k which will be used for debt reduction.
- ✦ Launch has a balance of \$648k with pledges of over \$2,849k which will be used for various initiatives within the scope of Launch.

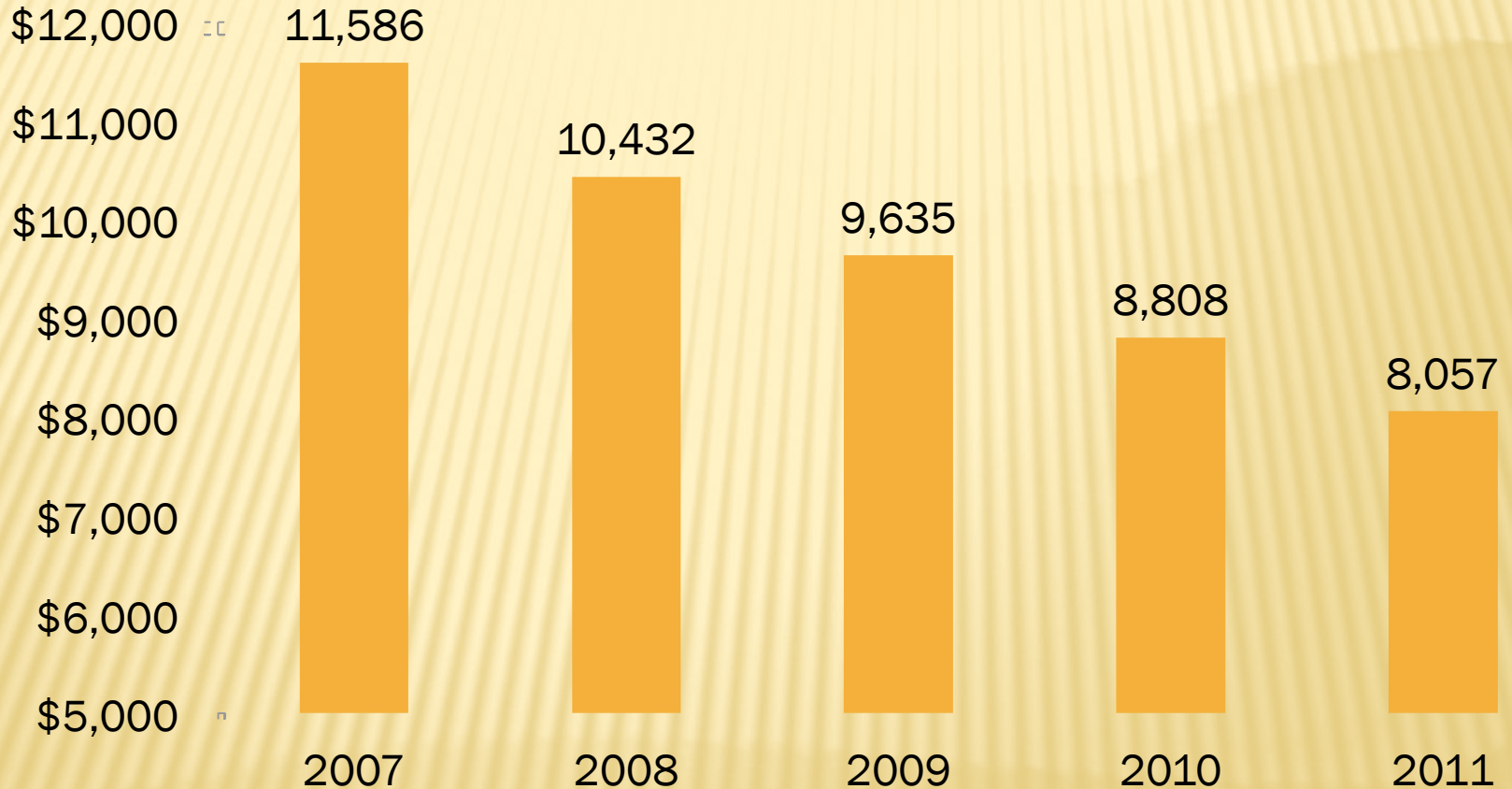
*All balances are as of 09/30/11.

BOND DEBT OUTSTANDING



*2011 balance is as of 09/30/11, all others are as of 12/31/**.

NET BOND DEBT OUTSTANDING



*2011 balance is as of 09/30/11, all others are as of 12/31/**.

QUESTIONS AND ANSWERS

- ✦ Check out our website for more information
 - ✦ Financial Statements
 - ✦ Board Reports
 - ✦ Audit Reports
 - ✦ Congregational Meeting Slides
- ✦ www.stjstl.net
 - ✦ About Us
 - ✦ Publications
 - ✦ Financials

BOARD OF DIRECTORS REPORT

Scott Hartwig
Board President

BOARD OF DIRECTORS

- ✦ Stephen Hower – CEO
- ✦ Jeff Cook – CFO
- ✦ Scott Hartwig – President
- ✦ Craig Moellenhoff – Vice President
- ✦ Joe Luberda – Secretary
- ✦ Mike Speichinger – Treasurer
- ✦ Andrew Stroud – At Large
- ✦ Brooke Graham – At Large
- ✦ Kristy Williams – At Large
- ✦ Mike Gessel – At Large
- ✦ Mindy Jeffries – At Large

BOARD FOCUS: TODAY AND INTO THE FUTURE

- ✦ Operations
 - ✦ Financial and Budget Oversight
 - ✦ Support Strategic Leaders through Ministry Teams
- ✦ Strategic Initiatives
 - ✦ LIFEjourney Integration
 - ✦ Stewardship/Giving
 - ✦ Community Church
 - ✦ Media/Technology
 - ✦ LCMS Relations
- ✦ Long Term Planning

CLOSING PRAYER

Dion Garrett

Director of Community Engagement